

TECHLEAD
reliable.affordable.efficient

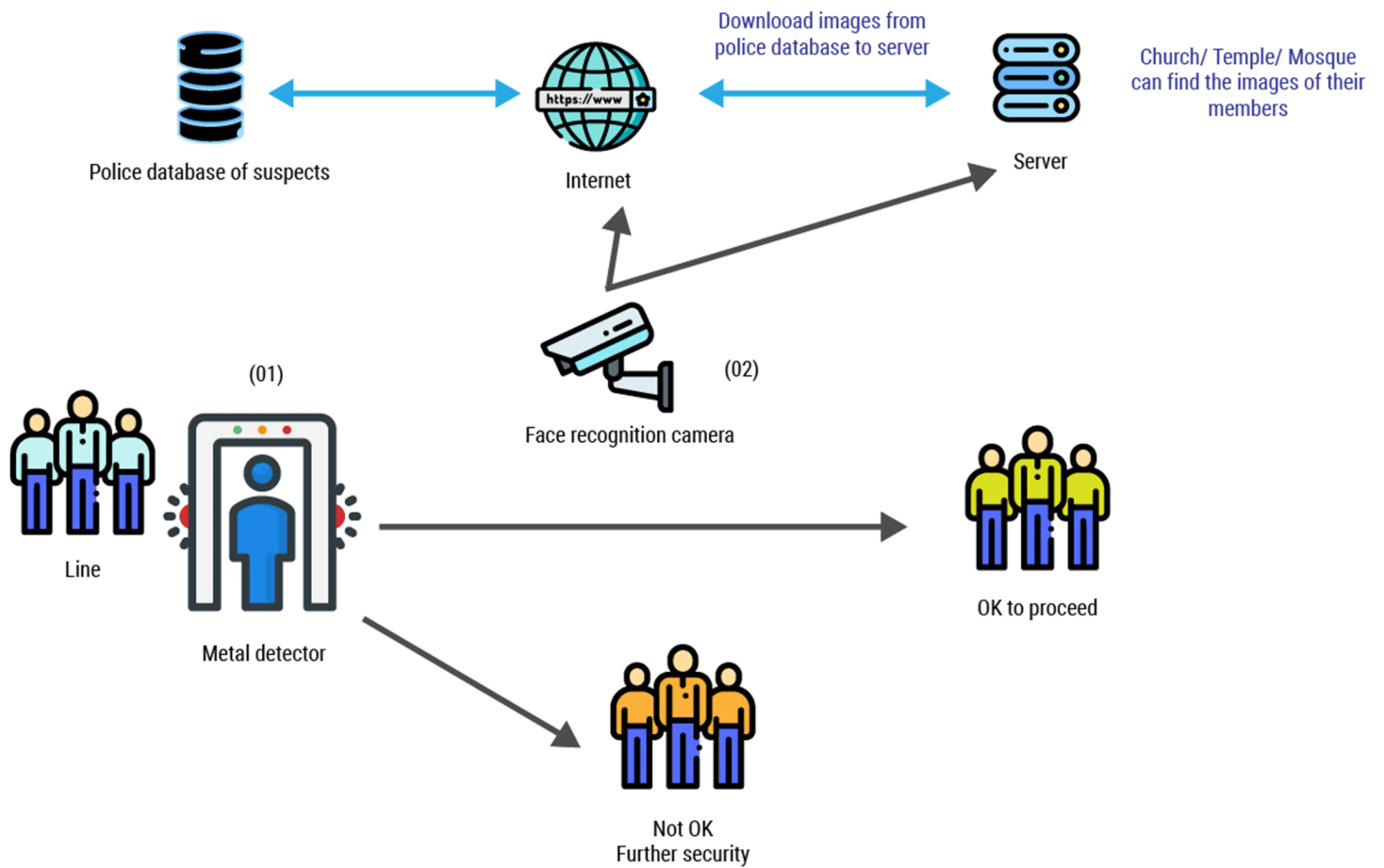


Techlead Security Solutions

FACE RECOGNITION



TECHLEAD SECURITY

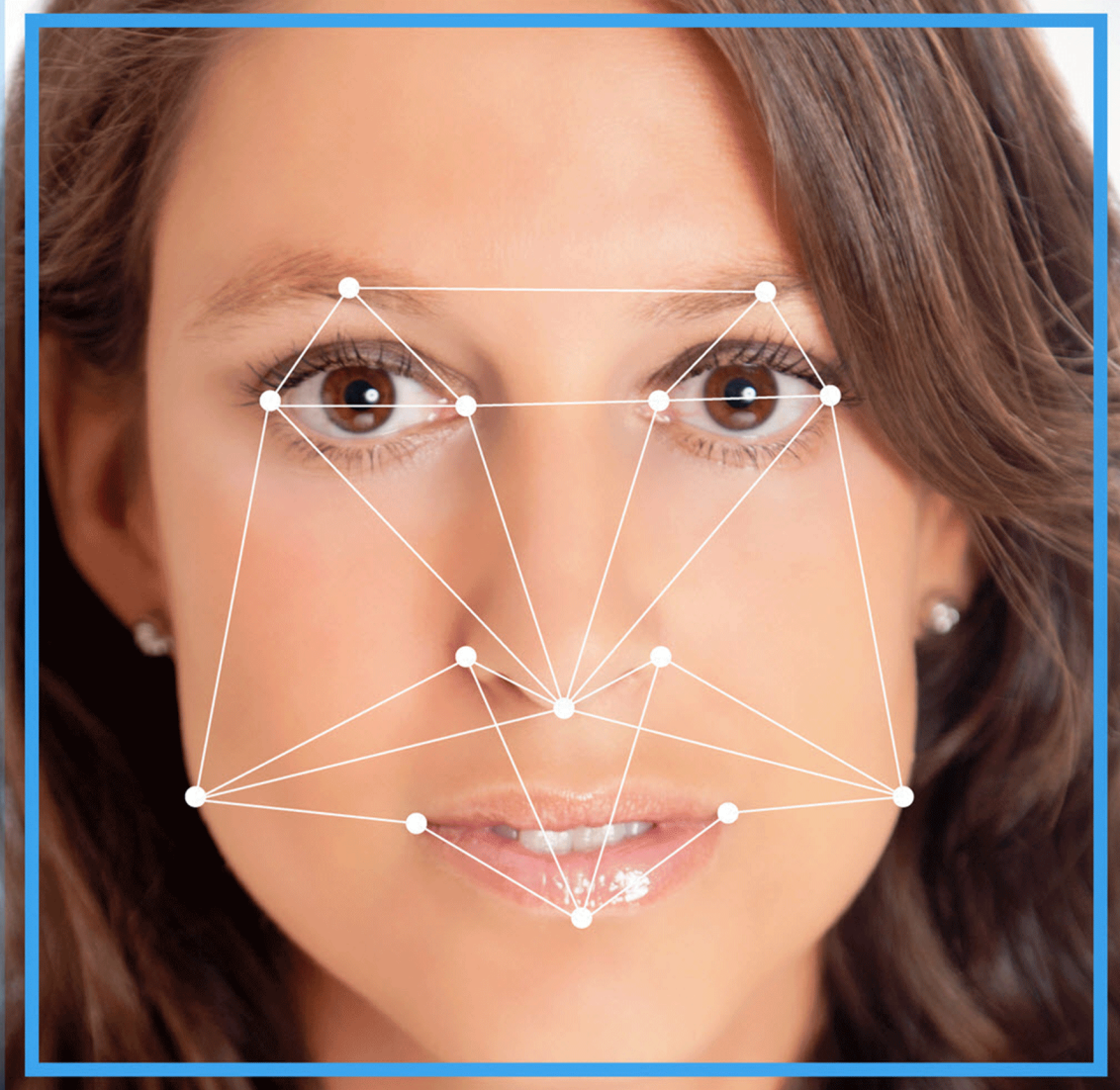


We Provide

- (01) Metal detector
- (02) Face recognition camera
- (03) Face recognition server and software
- (04) Support and warranty service

00000 000 0 00000000 00100111
0000 0 0000 0 0 0 00 100010111

010011000010 01000111000110
00101110101000011110101010
1101000010 10 11111000001001



IDENTITY PROTECTION

Name:

Password:

00000 000 0 00000000 00100111
0000 0 0000 0 0 0 00 100010111

010011000010 01000111000110
00101110101000011110101010
1101000010 10 11111000

FACE RECOGNITION CAMERA

2MP NETWORK IR BULLET



- 1/2.8" Progressive Scan CMOS
- 6mm(3.6mm/8mm optional)
- 25fps/30fps@2MP(1920*1080)
- Triple Streams
- Smart IR Up to 30m
- Support Face, body, head-shoulder detection and capture
- High performance , real-time to capture 15 targets for each
- Detecting and capture success rate 97% (depending on installation and angle)
- Max angle deviation $\pm 45^\circ$, up and down $\pm 25^\circ$
- WDR,3D DNR, ROI, Defog, HLC, DIS
- IP66

Smart Encode (H.265+)

Deliver high quality video without straining the network, Smart Encode H.265+ is the optimized implementation of H.265. The Smart H.265+ encoding technology includes a scene adaptive encoding strategy, dynamic GOP, dynamic ROI, flexible multi-frame reference structure and intelligent noise reduction, providing saving of up to 70% of bandwidth and storage when compared with standard H.265.

HEVC (H.265)

H.265 ITU-T VCEG is a new video coding standard. H.265 Following standard developed around the existing video coding standard H.264, some retain the original technology, while some of the relevant technology to improve the new technology uses advanced technology to improve the relationship between the code stream, encoding quality, and the delay between algorithm complexity, optimize settings specific contents include: Improve compression efficiency, improve the robustness and error recovery capabilities, real-time to reduce the delay, reduce channel acquisition time and a random access delay, reduce complexity.

System Overview

Project products by upgrading H.265 encoding technology, bringing high efficient video compression. It saves bandwidth and storage, energy-saving design to enhance the monitoring system. Meanwhile, the series offers features such as Smart IR technology, intelligent image analysis techniques. It provides excellent image quality and intelligent and efficient event reminders. This series provides IP66 weatherproof and IK10 vandal-proof protection feature.

Functions

Wide Dynamic Range

Embedded with industry leading wide dynamic range (WDR) technology, vivid pictures are achieved even in the most intense contrast lighting conditions. For applications with both bright and low lighting conditions that change quickly, true WDR (120dB) optimizes both the bright and dark areas of a scene at the same time to provide usable video.

Intelligent Video System (IVS)

Support Face, body, head-shoulder detection and capture. Also with built-in intelligent video analytics, the camera has the ability to detect and analyze moving objects for improved video surveillance. The camera provides optional standard intelligence at the edge allowing detection of Perimeter, Single Virtual Fences, Double Virtual Fences, Loiter, Multi Loiter, Object Left, Object Removed, Abnormal Speed, Converse, Illegal Parking, Signal Bad.

Environmental

With a temperature range of -20 °C to +50 °C (-4 °F to +122 °F), the camera is designed for extreme temperature environments. Subjected and certified to rigorous dust and water immersion tests, the IP67 rating makes it suitable for demanding outdoor applications.

Technical Specification

Camera

Image Sensor	1/2.8" Progressive Scan CMOS
Effective Pixels	1920(H)×1080(V)
Scanning System	Progressive
Electronic Shutter	1/5-1/20000s
Min. illumination	Color:0.01Lux@(F1.2,AGC ON) , B/W:0Lux@(IR LED ON)
S/N Ratio	55dB
IR Range	Up to 30m
IR On/Off Control	Auto/ Manual
IR LEDs	24pcs
Pan/Tilt/Rotation Range	Pan:0°~360°, Tilt:0°~90°, Rotation:0°~360°

Lens

Lens Type	Fixed
Iris	Fixed Iris
Focal Length	6mm (3.6mm/8mm optional)
F Number	F2.0
Angle of View	52°
Focus Control	Fixed
Close Focus Distance	N/A

Video

Compression	H.265,H.265,MJPEG
Max. Resolution	1080P(1920×1080)
Streaming Capability	3 Streams
Stream / Frame Rate	Stream1: 1920×1080/1280×720 @25/30fps Stream2: D1/VGA/640×360/CIF/QVGA @25/30fps Stream3: VGA/CIF/QVGA @25/30fps
Bit Rate Control	CBR/VBR
Bit Rate	Main Stream: 1080P 500Kbps~12Mbps 720P 200Kbps~8Mbps Sub Stream: 100Kbps~6Mbps
Day/Night	ICR
Image Enhancement	HLC / Defog / WDR (120dB)
White Balance	Support
Gain Control	Auto/Manual
Noise Reduction	2D/3D DNR
Electronic Image Stabilization(EIS)	Support
Smart IR	Support
Mirror	Support
Region of Interest	Support
Motion Detection	Support
Privacy Masking	Support

Audio

Compression	N/A
Bit Rate	N/A

Network

Protocols	IPv4/IPv6, 802.1x, HTTP, HTTPS, TCP/IP, UDP/IP, RTSP, DHCP, NTP, RTCP/RTP, PPPoE, SMTP, DNS, UPnP, FTP, ARP, SNMP
Interoperability	ONVIF
Streaming Method	Unicast
Max. User Access	10 Users
Web Viewer	<IE11
Management Software	IMS 3.0
Smart Phone	IOS, Android

Intelligence

IVS	Perimeter, Single Virtual Fences, Double Virtual Fences, Loiter, Multi Loiter, Object Left, Object Removed, Abnormal Speed, Converse, Illegal Parking, Signal Bad
Advanced Intelligent Functions	Face, body, head-shoulder detection

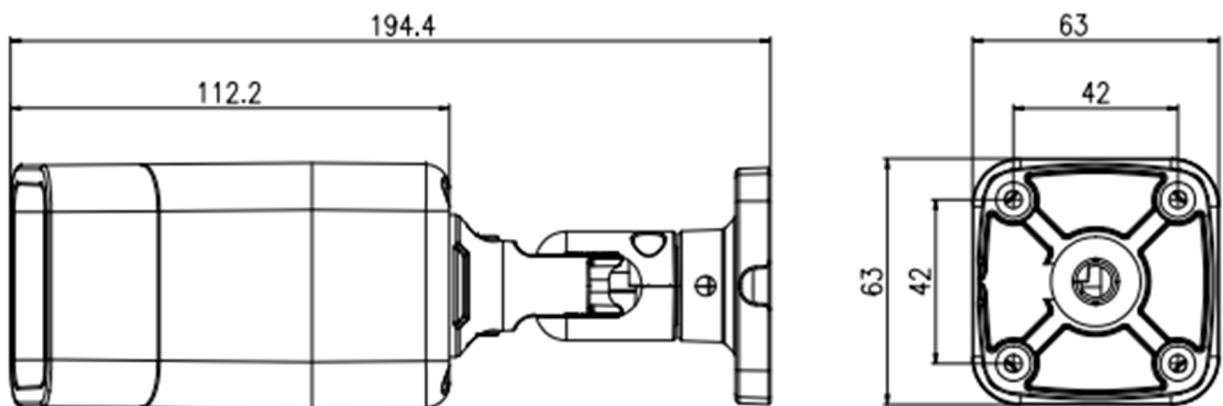
Interface

Ethernet	1 Ethernet (10/100 Base-T) RJ-45 Connector
Audio Interface	N/A
Alarm	N/A
RS485	N/A
BNC Output	N/A
Reset Button	N/A
Edge Storage	N/A

Electrical

Power Supply	DC12V/POE
Power Consumption	2.5W(IR LED OFF), 5W (IR LED ON)
Operating Temperature	Starting Temperature: -10°C ~ 50°C (14°F ~ 122°F) Working Temperature: -20°C ~ 50°C (-4°F ~ 122°F)
Operating Humidity	Less than 90% RH
Ingress Protection	IP66
Certifications	CE / FCC
Casing	Metal
Dimensions	194.4×63×63mm
Net Weight	500g

Dimensions(mm)



HAND HELD METAL DETECTOR



HAND HELD METAL DETECTORS

TL300 - Hand Held Metal Detector

Key Functions

- ON/OFF switch and HIGH/LOW sensitivity switch,if switch to LOW sensitivity,the device can only detec big metals.
- **Rechargeable battery and charger (For option).**
- Sensitivity level adjustable according to metal size.
- Flashing green LED (Power on), Flashing red LED (Low battery).
- **Alarm indicator light:** Continuous yellow LED (target be detected).
- **Reset time:** less than 0.5s.
- **High Sensitivity:** Pin: 10-30mm Knife: 160mm 64-Pistol :180-195mm
- **Use domain:** Security in buildings, Factories, Schools etc.



Technical Parameter

Power	standard 9V "AA" battery
Alarm Terms	sound (vibration) and light alarm
Unit Dimension	410(L)* 85(W)* 45(H) mm
Package	25pcs/carton
Gross Weight for a Carton	14kgs
Carton Dimension	510(L) X 260(W) X 430(H)mm
Warranty	One year

TL160 - Hand Held Metal Detector

Key Functions

- Ultra-high Sensitivity, can detects extremely small.
- Non-magnetic metal.
- **Alarm:** sound, light, vibration alarm
- **3 indicator light which shows its operation condition:** Green/Red/Yellow
- **Ultra-long standby:** about 100 hours long standby time, dedicated lithium up to 500 hours.
- **Material:** shock, impact resistant ABS plastic.
- **Charger:** optional
- **4 levels sensitivity for option:** low sensitivity, normal sensitivity, high sensitivity and ultra-high sensitivity
- **Application:** Customs, Airport, Court, Exhibition centre, Government office, Prison, Jewelry factories etc



Technical Parameter

Operating Temperature	-15 to +65
Power	dedicated 7.4V lithium battery/9V Ni-MH batteries
Package	25pcs/carton
Unit Dimension	350(L) X 80(W) X 60(H) mm
Unit Weight	nog
Warranty	One year

Walk Through Metal Detector



WALK THROUGH METAL DETECTOR

TLX500 - Walk Through Metal Detector



6 zones
(economical)

Key Functions

- Six mutual over-lapping detecting zones.
- **Self-diagnostic** program to check failure parts.
- **Sensitivity :0-99 level** , adjustable.
- Sound & LED alarm: 2 sides LED bar.
- Using high density fireproof material.
- Password protection, only the authorized person can operate.
- Easy assembly: designed with only 2 pieces cables and 8 screws.
- Harmless to heart pacemaker, pregnant women etc.
- Modularization design,easy for maintenance and replacement.
- Program Self-diagnostic when power on,no need initial or periodic calibration.
- Automatically count passengers and alarm times.
- Sensitivity Test piece: One yuan Coin, omnidirectional detection

Technical Parameter

Power	AC85-264V
Certification	CE,ISO
Gross weight	65KG
Package	2 Ctns/Pcs
Package size for control unit	760*380*260 mm*1ctn
Package size for door panel size	2290*560*190 mm*1ctn
Outer size	2200*800*580mm
Inner size	2010*700*500mm
Warranty	Two years free

TLX600 - Walk Through Metal Detector



6/12/18 zones

Key Functions

- **5 inch LCD screen, Infrared remote control, English program.**
- 6 detecting zones, Simultaneous alarm from multi- zones.
- **Sensitivity adjustable: Each zone has 256 sensitivity level.**
- Sound & LED alarm: Both Side LED indicator ,easily show where the metal is.
- **Automatically count passengers and alarm times.**
- **Alarm strength indicator on control panel.**
- Using high density fireproof material.
- Program Self-diagnostic when power on, no need initial or periodic calibration.
- Modularization design, easy for maintenance and replacement.
- Password protection, only the authorized person can operate.
- 4-8 hours backup battery (Option).
- Sensitivity Test piece: One yuan Coin, omnidirectional detection.

Technical Parameter

Power	AC85-264V
Certification	CE, ISO
Gross weight	65KG
Package	2 Ctns/Pcs
Package size for control unit	760*380*260 mm*1ctn
Package size for door panel size	2290*560*190 mm*1ctn
Outer size	2200*800*580mm
Inner size	2010*700*500mm
Warranty	Two years free

TLX700 - Walk Through Metal Detector



6/24 zones

Key Functions

- **Eight mutual over-lapping detecting zones**, simultaneous alarm from multi- zones.
- **7 inch LCD screen and Infrared remote control.**
- Sensitivity adjustable: Each zone has 256 sensitivity level.
- **Sound & LED alarm: Both Side LED indicator ,easily show where the metal is.**
- **Automatically count passengers and alarm times.**
- Using high density fireproof material.
- Program Self-diagnostic when power on,no need initial or periodic calibration.
- Modularization design,easy for maintenance and replacement.
- Password protection, only the authorized person can operate.
- Easy assembly: designed with only 2 pieces cables and 8 screws.
- Harmless to human body: is harmless with heart pacemaker, pregnant women etc.
- 4-8 hours backup battery (Option).

Technical Parameter

Power	AC85-264V
Certification	CE,ISO
Gross weight	65KG
Package	2 Ctns/Pcs
Package size for control unit	760*380*260 mm*1ctn
Package size for door panel size	2290*560*190 mm*1ctn
Outer size	2200*800*580mm
Inner size	2010*700*500mm
Warranty	Two years free

TLX800 - Walk Through Metal Detector



33 zones

Key Functions

- **33 Zones detecting zones, Simultaneous alarm from multizones**
- 7 inch LCD screen and Infrared remote control.
- **Sensitivity adjustable: Each zone has 999 sensitivity level.**
- Sound & LED alarm: Both Side LED indicator ,easily show where the metal is.
- **Automatically count passengers and alarm times. PASS and ALARM count: up to 99999.**
- **High sensitivity: Ferrous/ non-ferrous /Alloy can be detected.**
- 15 preset programs for security applications.
- Using high density fireproof material.
- Alarm volume range from level 0 to 9; Alarm tones: Change from 1 to 9.
- 100 frequencies for option. To work with neighbouring gates at 50cm.
- **Detecting speed: up to 100 passenger/ min.**
- Password protection, only the authorized person can operate.
- **Harmless to human body: is harmless with heart pacemaker, pregnant women.**
- Easy assembly: designed with only 2 pieces cables and 8 screws.

Technical Parameter

Power Supply	AC85-264V
Power Output	<20W
Certification	CE,ISO
Gross weight	65KG
Package	2 Ctns/Pcs
Package size for control unit	760*380*260 mm*1ctn
Package size for door panel size	2290*560*190 mm*1ctn
Outer size	2200*800*580mm
Inner size	2010*700*500mm
Warranty	Two years free

TLM600 - Walk Through Metal Detector



6/12 zones

Key Functions

- 6/12 detecting zones, Simultaneous alarm from multi- zones.
- **Oval shape door panels and LCD display.**
- **6-digits counter: Automatically count passengers and alarm times.**
- **Sensitivity adjustable: Each zone has 256 sensitivity level.**
- Protection level IP67, It can be used outdoor and Anti-interference function.
- Sound & LED alarm: Two Sides LED indicator easily show where the metal is.
- Using high density fireproof and waterproof material.
- Password protection, only the authorized person can operate.
- Easy assembly: designed with only 2 pieces cables and 8 screws.
- Harmless to human body: is harmless with heart pacemaker, pregnant women etc.
- Modularization design,easy for maintenance and replacement.
- Sensitivity Test piece: One yuan Coin, omnidirectional detection
- Infrared remote control & 4-8 hours backup battery (Option).

Technical Parameter

Power	AC85-264V
Certification	CE,ISO
Gross weight	55KG
Package	2 Ctns/Pcs
Package size for control unit	800*270*240 mm*1ctn
Package size for door panel size	2290*330*410mm*1ctn
Outer size	2240*990*300mm
Inner size	2000*710*300mm
Warranty	Two years free

TLM700 - Walk Through Metal Detector



24 zones

Key Functions

- 24 detecting zones and infrared remote control.
- **7-inch LCD touch screen, simple operation.**
- **300 adjustable sensibility levels.**
- **IP67 Superior waterproof performance.**
- Potable, foldable and waterproof.
- Self calibration once power on.
- Automatic counting function.
- Single person assembly without tools-in less than 5 minutes.
- Self diagnostic, it will inform the user when exit the system.
- Memory Feature Stores Settings for last operator when power off.
- DSP and Microprocessor Controlled , login into the control panel safely.
- Head-to-Toe, Zone Specific Detected.
- Backup battery (Option).

Technical Parameter

Power Supply	AC85-264V
Certification	CE,ISO
Gross Weight	50KG
Package	1 Carton
Package Size	1000*700*570 mm
External Dimension	:2250*850*500mm
Passage Dimension	2051*710*500mm
Fold Dimension	:889*606*484mm
Warranty	Two years free

TLZ800 - Walk Through Metal Detector



33 zones

Key Functions

- **33 Zones detecting zones, Simultaneous alarm from multizones**
- 7 inch LCD screen and Infrared remote control.
- **Sensitivity adjustable: Each zone has 300 sensitivity level.**
- Sound & LED alarm: Both Side LED indicator ,easily show where the metal is.
- Automatically count passengers and alarm times.
- 30 preset programs for security applications.
- High sensitivity: Ferrous/ non-ferrous /Alloy can be detected.
- **Power save: Automatically power OFF if no passengers in 5 mins.**
- 100 frequencies for option. To work with neighbouring gates at 40cm.
- Detecting speed: up to 100 passenger/ min.
- Password protection, only the authorized person can operate.
- **Easy assembly: designed with only 2 pieces cables and 8 screws.**
- Harmless to human body: is harmless with heart pacemaker, pregnant women etc.

Technical Parameter

Power Supply	AC85-264V/47.5-60Hz
Power Output	< 15W
Certification	CE,ISO
Gross Weight	80KG
Package	2 Ctns/Pcs
Package Size	2050*750*600mm
Working Environment	-20 ~+50
Operating Frequency	100 selectable
Warranty	Two years free

X-RAY BAGGAGE SCANNER



X-RAY BAGGAGE SCANNER

TLF5030A - X-Ray Baggage Scanner



Standard Accessories
Out roller

Key Functions

X-RAY Sensor

- L-shaped array detector, 24bit, Single energy

Image Performance System

- Display: High-resolution 19 inch color LCD display
- Color quality: 24-Bit real colors based on materials
- Edge enhancement; Super image enhancement
- High/low penetration display
- Magnifier, Brightening/dimming, Image recurrence/restoration
- Image storage: Real-time store any image and process it in operation status

Features

- Network interface
- Safety ray
- One-key shutdown control
- Self-diagnosis function

Operating Environment

- Storage Temperature: -20oC to 60oC
- Operating Temperature: 0oC to 45oC
- Relative Humidity: 20 to 95% non-condensing
- System Power: 220 VAC (±10%) 50±3HZ
- Power wastage: 1.0 KW (Max)
- Noise<65DB

General Specifications

Tunnel Size	500 (W) ×300 (H) mm
Conveyor Speed	0.22m/s
Conveyor Max Load	100 kg

Leakage radiation <0.1μGy/h

Steel Penetration	10mm
Package(mm)	1880*880*1430
Gross weight	425kg

X-Ray Generator

Orientation	Upward
Tube Current	0.4~0.7mA (adjustable)
Anode Voltage	80KV (adjustable)
Angle	60°
Sealed oil bath with forced air/100%	
Warranty	Two years

TLF5030C - X-Ray Baggage Scanner



Standard Accessories
Out roller

Key Functions

X-RAY Sensor

- L-shaped array detector, 24bit, Single energy

Image Performance System

- Display: High-resolution 19 inch color LCD display
- Color quality: 24-Bit real colors based on materials
- Edge enhancement; Super image enhancement
- High/low penetration display
- Magnifier, Brightening/dimming, Image recurrence/restoration
- Image storage: Real-time store any image and process it in operation status
- Multi-energy: High/low energy: Switch from high energy to low energy
- Color material identification: Organic objects in orange, inorganic objects in blue, mixture in green

Features

- Network interface
- Safety ray
- One-key shutdown control
- Self-diagnosis function

Operating Environment

- Operating Temperature: 0oC to 45oC
- Relative Humidity: 20 to 95% non-condensing
- System Power: 220 VAC (±10%) 50±3HZ
- Power wastage: 1.0 KW (Max)

General Specifications

Tunnel Size	500 (W) ×300 (H) mm
Conveyor Speed	0.22m/s
Conveyor Max Load	120 kg

Leakage radiation <0.1μGy/h

Steel Penetration	43mm
Package(mm)	1880*880*1430
Gross weight	425kg

X-Ray Generator

Orientation	Upward
Tube Current	0.4~0.7mA (adjustable)
Anode Voltage	100-160KV (adjustable)
Angle	80°
Sealed oil bath with forced air/100%	
Warranty	Two years

TLF5636 - X-Ray Baggage Scanner



Standard Accessories
Out roller

Key Functions

X-RAY Sensor

- L-shaped array detector, 24bit, Single energy
- **Image Performance System**
- Display: High-resolution 19 inch color LCD display
- Color quality: 24-Bit real colors based on materials
- Edge enhancement; Super image enhancement
- High/low penetration display
- Magnifier, Brightening/dimming, Image recurrence/restoration
- Image storage: Real-time store any image and process it in operation status
- Multi-energy: High/low energy: Switch from high energy to low energy
- Color material identification: Organic objects in orange, inorganic objects in blue, mixture in green

Features

- Network interface
- Safety ray
- One-key shutdown control
- Self-diagnosis function

Operating Environment

- Storage Temperature: -20oC to 60oC
- Operating Temperature: 0oC to 45oC
- Relative Humidity: 20 to 95% non-condensing
- System Power: 220 VAC (±10%) 50±3HZ
- Power Wastage: 1.0 KW (Max)
- Noise<55DB

General Specifications

Tunnel Size	560 (W) ×360 (H) mm
Conveyor Speed	0.22m/s
Conveyor Max Load	150 kg

Leakage radiation <0.1μGy/h

Steel Penetration	40mm
Conveyor Height	55~75cm(adjustable)
Package(mm)	1900*930*1460
Gross weight	430kg

X-Ray Generator

Orientation	Upward
Tube Current	0.4~1.25mA (adjustable)
Anode Voltage	80-160KV (adjustable)
Angle	80°
Sealed oil bath with forced air/100%	
Film Safety	For ISO 1600 film
Warranty	Two years

TLF6040 - X-Ray Baggage Scanner



Standard Accessories
Out roller

Key Functions

X-RAY Sensor

- L-shaped array detector, 24bit, multiple energy

Image Performance System

- Display: High-resolution 19 inch color LCD display
- Color quality: 24-Bit real colors based on materials
- Edge enhancement; Super image enhancement
- High/low penetration display
- Magnifier, Brightening/dimming, Image recurrence/restoration
- Image storage: Real-time store any image and process it in operation status
- Multi-energy: High/low energy: Switch from high energy to low energy
- Color material identification: Organic objects in orange, inorganic objects in blue, mixture in green

Features

- Network interface
- Safety ray
- One-key shutdown control
- Self-diagnosis function

Operating Environment

- Storage Temperature: -20oC to 60oC
- Operating Temperature: 0oC to 45oC
- Relative Humidity: 20 to 95% non-condensing
- System Power: 220 VAC (±10%) 50±3HZ
- Power Wastage: 1.0 KW (Max)
- Noise<55DB

General Specifications

Tunnel Size	600 (W) ×400 (H) mm
Conveyor Speed	0.22m/s
Conveyor Max Load	150 kg

Leakage radiation <0.1μGy/h

Steel Penetration	40mm
Conveyor Height	55~75cm(adjustable)
Package(mm)	1900*930*1460
Gross weight	430kg

X-Ray Generator

Orientation	Upward
Tube Current	0.4~1.25mA (adjustable)
Anode Voltage	80-160KV (adjustable)
Angle	80°
Sealed oil bath with forced air/100%	
Film Safety	For ISO 1600 film
Warranty	Two years

TLF6550 - X-Ray Baggage Scanner



Standard Accessories
Out roller
&
Control shelf (one monitor)

Key Functions

Image Performance System

- Display: High-resolution 19 inch color LCD display
Display Resolution: 1280*1024;24 bit/pixel Color
- Contrast Sensitivity: 24 Visible Levels, 4096 Gray Level
- Image storage: 100,000 pictures in real time (can be customized)
- Magnifier, Brightening/dimming, Image recurrence/restoration
- Image storage: Real-time store any image and process it in operation status
- Multi-energy (M) color material identification: Organic objects in orange, inorganic objects in blue, mixture in green

X-RAY Sensor

- L-shaped array detector, 24bit, multiple energy

Features

- Network interface
- Safety ray
- One-key shutdown control
- Self-diagnosis function

Operating Environment

- Storage Temperature: -20oC to 60oC
- Operating Temperature: 0oC to 45oC
- Relative Humidity: 20 to 95% non-condensing
- System Power: 220 VAC (±10%) 50±3HZ

General Specifications

Tunnel Size	650 (W) ×500 (H) mm
Conveyor Speed	0.22m/s
Conveyor Max Load	170 kg

Leakage radiation <0.1μGy/h

Steel Penetration	40mm
Conveyor Height	55~75cm(adjustable)
Package(mm)	:2350*1030*1440(machine)
Gross weight	665kg

X-Ray Generator

Orientation	Upward
Tube Current	0.4~1.25mA (adjustable)
Anode Voltage	100-160KV (adjustable)
Angle	80°
Sealed oil bath with forced air/100%	
Film Safety	For ISO 1600 film
Warranty	Two years

TLF8065 - X-Ray Baggage Scanner



Standard Accessories
Out roller
&
Control shelf (Two monitors)

Key Functions

Image Performance System

- Display: High-resolution 2x19 inch color LCD display
- Display Resolution: 1280*1024;24 bit/pixel Color
- Contrast Sensitivity: 24 Visible Levels, 4096 Gray Level
- Image storage: 100,000 pictures in real time (can be customized)
- Magnifier, Brightening/dimming, Image recurrence/restoration
- Image storage: Real-time store any image and process it in operation status
- Multi-energy (M) color material identification: Organic objects in orange, inorganic objects in blue, mixture in green

X-RAY Sensor

- L-shaped array detector, 24bit, multiple energy

Features

- Network interface
- Safety ray
- One-key shutdown control
- Self-diagnosis function

Operating Environment

- Storage Temperature: -20oC to 60oC
- Operating Temperature: 0oC to 45oC
- Relative Humidity: 20 to 95% non-condensing
- System Power: 220 VAC (±10%) 50±3HZ
- Power Wastage: 1.0 KW (Max)
- Noise<55DB

General Specifications

Tunnel Size	800 (W) ×650 (H) mm
Conveyor Speed	0.22m/s
Conveyor Max Load	200 kg

Leakage radiation <0.1μGy/h

Steel Penetration	38mm
Conveyor Height	55~75cm(adjustable)
Package(mm)	2000*1210*1690 (machine)
Gross weight	800kg

X-Ray Generator

Orientation	Downward
Tube Current	0.4~1.2mA (adjustable)
Anode Voltage	100-160KV (adjustable)
Angle	80°
Sealed oil bath with forced air/100%	
Film Safety	For ISO 1600 film
Warranty	Two years

TLF10080 - X-Ray Baggage Scanner



Standard Accessories
Out roller
&
Control shelf (Two monitors)

Key Functions

Image Performance System

- Display: High-resolution 2x19 inch color LCD display
- Display Resolution: 1280*1024;24 bit/pixel Color
- Contrast Sensitivity: 24 Visible Levels, 4096 Gray Level
- Image storage: 100,000 pictures in real time (can be customized)
- Magnifier, Brightening/dimming, Image recurrence/restoration
- Image storage: Real-time store any image and process it in operation status
- Multi-energy (M) color material identification: Organic objects in orange, inorganic objects in blue, mixture in green

X-RAY Sensor

- L-shaped array detector, 24bit, multiple energy

Features

- Network interface
- Safety ray
- One-key shutdown control
- Self-diagnosis function

Operating Environment

- Storage Temperature: -20oC to 60oC
- Operating Temperature: 0oC to 45oC
- Relative Humidity: 20 to 95% non-condensing
- System Power: 220 VAC (±10%) 50±3HZ
- Power Wastage: 1.0 KW (Max)
- Noise<58DB

General Specifications

Tunnel Size	1000 (W) ×800 (H) mm
Conveyor Speed	0.22m/s
Conveyor Max Load	230 kg

Leakage radiation <0.1μGy/h

Steel Penetration	38mm
Conveyor Height	30~40cm(adjustable)
Package(mm)	2380*1420*1840 (machine)
Gross weight	1060kg

X-Ray Generator

Orientation	Downward
Tube Current	0.4~1.2mA (adjustable)
Anode Voltage	100-160KV (adjustable)
Angle	80°
Sealed oil bath with forced air/100%	
Film Safety	For ISO 1600 film
Warranty	Two years

TLF100100 - X-Ray Baggage Scanner



Standard Accessories
Out roller
&
Control shelf (Two monitors)

Key Functions

Image Performance System

- Display: High-resolution 2x19 inch color LCD display
- Display Resolution: 1280*1024;24 bit/pixel Color
- Contrast Sensitivity: 24 Visible Levels, 4096 Gray Level
- Image storage: 100,000 pictures in real time (can be customized)
- Magnifier, Brightening/dimming, Image recurrence/restoration
- Image storage: Real-time store any image and process it in operation status
- Multi-energy (M) color material identification: Organic objects in orange, inorganic objects in blue, mixture in green

X-RAY Sensor

- L-shaped array detector, 24bit, multiple energy

Features

- Network interface
- Safety ray
- One-key shutdown control
- Self-diagnosis function

Operating Environment

- Storage Temperature: -20oC to 60oC
- Operating Temperature: 0oC to 45oC
- Relative Humidity: 20 to 95% non-condensing
- System Power: 220 VAC (±10%) 50±3HZ
- Power Wastage: 1.0 KW (Max)
- Noise<58DB

General Specifications

Tunnel Size	1000 (W) ×100 (H) mm
Conveyor Speed	0.22m/s
Conveyor Max Load	250 kg

Leakage radiation <0.1μGy/h

Steel Penetration	38mm
Conveyor Height	30~40cm(adjustable)
Package(mm)	2800*1450*2080 (machine)
Gross weight	1200kg

X-Ray Generator

Orientation	Downward
Tube Current	0.4~1.2mA (adjustable)
Anode Voltage	100-160KV (adjustable)
Angle	80°
Sealed oil bath with forced air/100%	
Film Safety	For ISO 1600 film
Warranty	Two years

Under Vehicle Surveillance System Mobile Type



UNDER VEHICLE SURVEILLANCE SYSTEM MOBILE TYPE

TLV300-M - Under Vehicle Surveillance System Mobile Type



Software

- Using black and white Array CCD scanning technology dynamic imaging.
- Scanning Image Resolution: ≥ 2048 .
- Store or Load Time: <1 second.
- Vehicle Image Display Mode: large format transverse.
- System Interface Language: English (can be customized).
- Display Resolution: adapt to a variety of display resolution.
- Vehicle Image Data Transfer Interface: NetworkRJ45.
- Scene Image Display: ≥ 1 channel.
- Dedicated image processing functions.
- License plate recognition (need customer provide the SDK LPRsoftware of the exported country, we can integrate it to the UVSS without extra cost)

Specifications of Host Computer

Display	22 inch LCD Screen
CPU	INTEL Quad-Core Processor
Motherboard	dedicated motherboard
Memory	DDR3 , more than 2GB
Hard Disk	500G high-speed hard disk
Working Voltage	AC220V 50/60Hz
Data Transmission Cable Length	10m (standard)
Warranty	One year

**Under Vehicle
Surveillance
System
Fixed Type**



UNDER VEHICLE SURVEILLANCE SYSTEM FIXED TYPE

TLV300-F - Under Vehicle Surveillance System Fixed Type



Software

- Store or Load Time: <1 second.
- Vehicle Image Local Magnification: > 2 times.
- Vehicle Image Scaling: 16 times.
- Vehicle Image Display Mode: large format transverse.
- Vehicle Image Storage Format: BMP or JPEG.
- System Interface Language: English (can be customized).
- Display Resolution: 1920 * 1080P.
- Communication Interface: RS232/RS422.
- Scene Image Display: ≥1 channel.
- Speed Identification: when the vehicle pass the scanner and stops suddenly, then restart, the device can identify automatically, system will display the complete vehicle image.
- Scan Mode: linear scanning, the ground sensor coil trigger.
- Vehicle Speed: 1-60km/h, suggest speed : less than 30km/h.
- View Angle: 175 degrees.
- Image Longitudinal Resolution: 2048 pixels CCD.

Specifications of Host Computer

Working Voltage	DC24V
Power Supply	AC110V-240V/50-60Hz
Structure Design	single sealed design
Loading Weight	30 Tons
Scanner Size	1200*350*210mm
Weight	180kg
Environment Temperature	40 degrees - +70 degrees
Scanner Connecting Cable	100 meters (can be customized)
Lighting Components	Four single sealed LED
Surface Light Source	100,000h
Under vehicle image scanner with a unique	openwide field scan design
Warranty	One year

**Under Vehicle
Inspection
Camera
DVR System**



UNDER VEHICLE INSPECTION CAMERA DVR SYSTEM

TLV260 - Under Vehicle Inspection Camera DVR System



7' Screen DVR

HD Video Output	HDMI : 1920* 1080 ; 1280*720
Video Storage Pixels (16:9)	HDMI : 1920* 1080 ; 1280*720
Video Compression Format	H.264
Video Storage	AVI
HD Digital Video Input Interface	FPD-LinkIII
Audio Frequency Range	20HZ-20KHz AAC
Audio Compression Format	AAC
Photo Format	JPG 3.15 Mega:3200(H)×1800(V)
Storage	External SD card TF card 1GB-64GB (Optional)
32GB Recording Time	10-32 hours
Operating System	Windows & Mac OS
Port	USB 2.0
Language	Multiple
Voltage	DC :7-24V
USB	DC:5V
Current (Monitor mode)	400MA
Current (Video mode)	500MA
AC Adapter	DC 12V 1A
Built-in Battery	Li-battery 5000Mah
Wireless Record Time	≥10hours
Dimension	177mm x120mm x 20mm
Weight	350 g

TLV260 - Under Vehicle Inspection Camera DVR System

Mini camera for Wheels tray

Optical Element	1/2.5 CMOS Sensor SONY
Optical Total Pixels	2.5M : 2000 (H) × 1121 (V)
CMOS Sensor Size	5.6mm (H) × 3.14mm (V)
Sensitivity	0.08Lux/F1.2
Lens & View Angle	3.6mm F1.2 (H) 90 °
HD Video Output Interface	FPD-Link III
Waterproof Rate	IP68
Camera Pole	2m Telescopic Survey Pole
Dimension & Weight	18 x 28mm, 10g
Cable(4 Cores High-Speed Line)	Diameter: 3.5mm Length: 2.7meters

Flexible camera

Optical Element	1/3 CMOS Sensor SONY
Optical Total Pixels	3.5 Mega : 2304(H)1536(V)
CMOS Sensor Size	5.07mm (H) × 3.38mm (V)
Sensitivity	0.2Lux/F1.2
Lens & View Angle	0.5mm F1.2 90 °
HD Video Output Interface	FPD-Link III
Waterproof Rate	IP68
Camera Pole	2m Telescopic Survey Pole
Dimension & Weight	18 x 28mm, 10g
Cable(5 Cores High-Speed Line)	Diameter: 3.5mm Length: 3meters

TLV200 - Under Vehicle Inspection Camera DVR System



Function

- Place of Origin: China
- Aluminum handles extend from 42" to 51"6.
- RoHS: Passed
- Rods and Base Painting: Outdoor painting
- Rods Color: Black
- Mirror Size: 12" / 30cm
- Material of Mirror: Acrylic
- Packaging: 5pcs in one carton, 60.5 x 33.5 x 45.5 cm, 9kg/carton
- 12" round convex or flat acrylic mirror equipped with adjustable swivel for infinite adjustment.
- Has a heavy-duty extruded rubber rim to help prevent damaging objects when maneuvering.
- Available with tripod ball bearing caster wheels, allowing full range of motion with effortless maneuvering.
- Lightweight with adjustable handle Low 3.5" ground clearance.
- Available with flashlight, batteries and mounting bracket.

Information

The Under Vehicle Search Mirror is portable inspection mirrors that are invaluable for looking into hard to see places in high security areas. Use wherever direct observation is not possible. The mirror is with either a Trolley or Hand-held system. Inspection mirrors are made of unbreakable acrylic mirror or high durable glass. Lightweight but sturdy fittings make using the inspections mirrors simple to use and the adjustable mirror head permits acding maintenance, armed services and security guards.

Warranty One Year

TECHLEAD
reliable.affordable.efficient



Sri Lanka

No. 65
Braybrooke Place,
Colombo 2,
Sri Lanka
+94 112 326344

USA

11811 North Freeway
Suite 500
Houston, TX77060
United States
+1 281 993 7074